



SPECIFICATION : TSOPA-H1504-PCT

	Open Frame Chassis LCD Monitor
MODEL	TSOPA
PRODUCT NO.	TSOPA-H1504-PCT
CUSTOMER	
DATE	2022-03-22

APPROVED BY CLIENT

APPROVED BY TOUCH AND DISPLAYS CO.,LTD	
ENGINEER	
REVIEWER	 <small>Touch & Displays Co., Ltd. Sung-Hyun Kim Marketing Director</small>
CONFIRMED	



DOCUMENT REVISION HISTORY

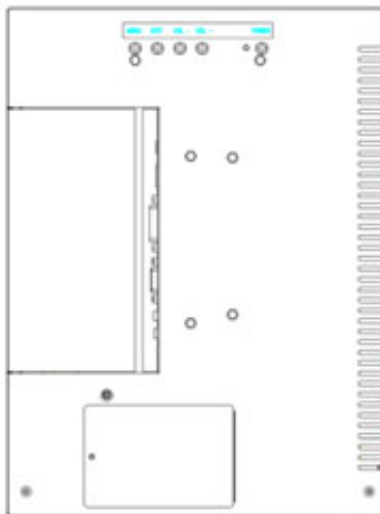
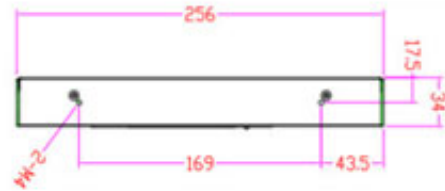
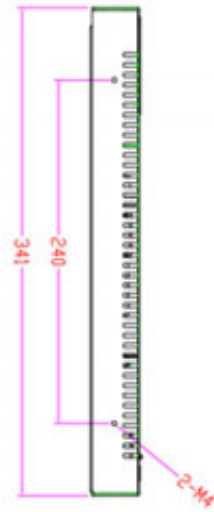
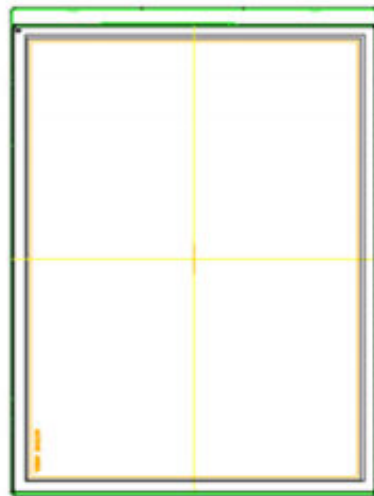
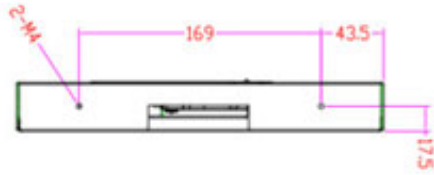
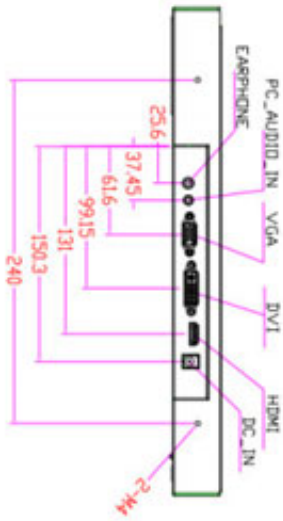
Date	Rev. No	Page	Description
03,22	TDS154	All	New

MONITOR SPECIFICATIONS

ITEM S	SPECIFICATION		
LCD	The following items are characteristics summary on the table under 25 °C condition:		
	Items	Unit	Specifications
	Screen Diagonal	[inch]	15
	Active Area	[mm]	304.128(H) x 228.096(V)
	Pixels H x V		1024x3(RGB) x 768
	Pixel Pitch	[mm]	0.297 x 0.297
	Pixel Arrangement		R.G.B. Vertical Stripe
	Display Mode		TN, Normally White
	Nominal Input Voltage VDD	[Volt]	3.3 typ.
	Typical Power Consumption	[Watt]	23.81W
	Weight	[Grams]	1000g (max.)
	Physical Size	[mm]	326.5(H)x 253.5(V) x 10.0(D) (max.)
	Electrical Interface		LVDS
	Surface Treatment		Anti-glare, 3H
	Support Color		16.2M/ 262K
	Temperature Range Operating Storage (Non-Operating)	[°C] [°C]	-30 to +70 -30 to +70
	RoHS Compliance		RoHS Compliance
Light Bar Unit		LED, non-replaceable	

The optical characteristics are measured under stable conditions at 25°C (Room Temperature):						
Item	Unit	Conditions	Min.	Typ.	Max.	Note
White Luminance	[cd/m ²]		1600	1800	-	1
Uniformity	%	9 Points	75	80	-	1, 2, 3
Contrast Ratio			400	800	-	4
Cross talk	%		-	1.2	1.5	5
Response Time	[msec]	Rising	-	5.7		6
	[msec]	Falling	-	2.3		
	[msec]	Raising + Falling	-	8		
Viewing Angle	[degree]	Horizontal (Right) CR = 10 (Left)	70	80	-	7
	[degree]		70	80	-	
	[degree]	Vertical (Upper) CR = 10 (Lower)	60	70	-	
	[degree]		70	80	-	
Color / Chromaticity Coordinates (CIE 1931)		Red x	0.547	0.597	0.647	
		Red y	0.289	0.339	0.389	
		Green x	0.279	0.329	0.379	
		Green y	0.546	0.596	0.646	
		Blue x	0.104	0.154	0.204	
		Blue y	0.003	0.053	0.103	
		White x	0.263	0.313	0.363	
		White y	0.279	0.329	0.379	
Color Gamut	%	NTSC		60	-	
Speaker		Optional				
Interface		HDMI, DVI-D, VAG, Audio In, Earphone				
Accessories		1 x Power Adapter, 1 x Power Cable, HDMI				

MECHANICAL DRAWING





DQ : TDS230322-J01

NOTE

1. This is a simplified drawing and some components are not marked in detail.
2. Please contact our sales representative if you need further product information.
3. All specifications are subject to change without prior notice.
4. The product shown in this datasheet is a standard model. For diagrams that contain customized or optional I/O , please contact our Team for more information.

NOTE

1. This is a simplified drawing and some components are not marked in detail.
2. Please contact our sales representative if you need further product information.
3. All specifications are subject to change without prior notice.
4. The product shown in this datasheet is a standard model. For diagrams that contain customized or optional I/O please contact the Sales Team for more information.

